



Governor's Annual Report to Parents 2020 to 2021

A message from our Governing Body:

It gives us great pleasure to share with you our annual report for the academic year 2020 to 2021. Despite the restrictions that we all faced due to the Coronavirus pandemic, school continued to provide a safe and happy environment where all the children could learn, develop and flourish.

As a school we continue to move forward with new and exciting initiatives being introduced and plans to further develop our curriculum in the best interests of all the children.

We would like to extend our sincere thanks to all the staff at Park C.P. for the commitment and dedication they show on a daily basis, they truly do go over and above for the children and their efforts are much appreciated by us all.

Thanks to you too – the parents and carers of the children here at Park C.P. Your on-going support has been invaluable during these challenging times and working together will benefit not only school but the community as a whole.

A new chapter opened for our school in September 2020, as we welcomed our new Headteacher, Mrs R Billington.

Our Governing Body

Chair of Governors: Mr Ian Edwards

Headteacher: Mrs Rebecca Billington

Parent Governors: *(Elected by parental vote and serve a 4 year term; all terms started October 2020):*

Mrs Amanda Jones

Mrs Sarah Jones

Mrs Ceri Williams

Mr Mike Smith

Mr Mathew Ellis

Governors did not receive any funds for travel expenses or any other expenses during the year.

Teacher Governors: *(Elected by teachers)*

Mrs Beth Rolls

Mrs Emma Rogers

Staff Governors: *(Elected by non-teaching staff)*

Mrs Myra Cawthorne

Wrexham LA Governors: *(Appointed by Wrexham Local Authority)*

Mr Rob Walsh

Mrs Liz Davies

Mr Daniel Robertson

VACANCY

Community Governors: *(Invited to join the Governing Body by other members due to their specialist skills which add value to the Governing Body as a whole)*

Mr Paul Whiting (Vice Chair)

Mr Wynn Austin

Mrs Lynda Love

Mrs Clare Harding

Clerk to the Governing Body : Amanda Lowndes

Correspondence should be addressed to the Clerk or Chair and sent to:

Park C.P. School,

School Road,

Llay,

Wrexham

LL12 0TR

The Role of the Governing Body at School:

Our Governing Body serves to drive the strategic development of the school ensuring that we raise standards of achievement and meet the needs of all learners.

Each member of the Governing Body sits on at least one committee, which focus on key areas including Staffing, Curriculum, Premises and Budget. Governors choose which committee(s) they sit on depending, on their interests or areas of expertise.

Committees meet once a term, usually via Zoom, to receive a comprehensive report from the Headteacher. In addition, Governors also visit the building to complete Health & Safety checks and are welcomed to meet with the children to view samples of work and observe academic standards.

Meetings of the full Governing Body take place termly and when possible are held face to face.



Staff from Tryfan Class on our Super Hero Theme Day!

A Message from the Staffing Committee:

The Staffing Committee meet to ensure suitable staffing is maintained at the school, in line with the schools budget. The committee are actively involved in ensuring Performance Management targets are met and discuss any training or support needed by all members of staff.

Members of the Staffing Committee are called upon for interviews when new members of staff are required and they ensure the process from application to appointment is fair and in the best interests of the school. During the year 2020 to 2021, members of the committee alongside the Headteacher appointed teachers to cover the Maternity posts for Mrs Justine Poole and to teach in our Nursery Class.

School Finances:

The Finance Committee strive to ensure that the school operates within its budget. During the year 2020 to 2021 we did not have to seek permission to run a deficit budget as the school was able to carry over a surplus.

Budget forecasts can frequently change throughout the course of the year and by proper scrutiny and advice the committee were able to support the Headteacher in managing the school's finances extremely well and we are grateful to them for their hard work in doing so.

During the year 2020 to 2021 the Finance Committee ensured a dedicated budget was awarded to improving Literacy at school with the introduction of the Read, Write, Inc. and Fresh Start Programmes. This budget covered the costs of staff training and the purchase of new resources to support the programme.



A Message from the Curriculum Committee:

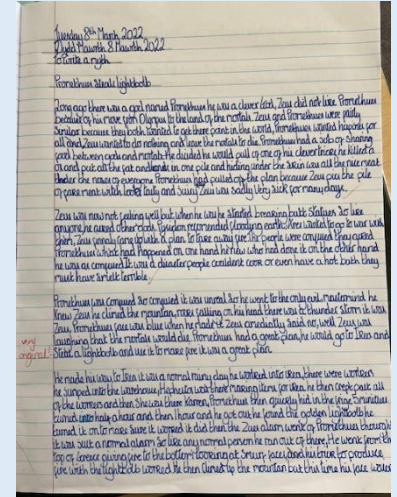
The Curriculum Committee looks at the work that takes place within the classroom at Park CP School. Governors on the committee work alongside staff to support and challenge the curriculum delivery. They also receive reports at regular intervals throughout the academic year from the Headteacher on the tracking and monitoring of pupil performance data. This supports the school in ensuring that every pupil achieves their potential at the end of each key stage.

During the 2020 to 2021 academic year, much of the focus at school was on the mental health & well-being of the children following the lockdown period and ensuring appropriate opportunities were given to develop skills in key areas such as reading and writing.

Evaluation Committee Meetings:

The Evaluation Committee take a proactive approach and visit school each term to monitor the standards of work produced by the children and to carefully scrutinise data.

Unfortunately, due to the Coronavirus pandemic, visits to school were suspended in the year 2020 to 2021 and the committee was unable to meet. Regular updates around progress was still given via the termly Headteacher's Report to the Governing Body.



Health & Safety – Premises Committee

In 'normal' times Committee members meet at school termly to assess the premises and ensure all Health & Safety requirements are being met appropriately. Due to the Coronavirus pandemic, meetings were unable to go ahead in the year 2020 to 2021, however, updates were given during full meetings of the Governing Body via the Headteacher's Report. As would be expected, keeping school CoVid safe to reduce the risk to children, staff and the wider community was a priority.

In addition:

- ✓ Fire Drills were carried out termly and any issues addressed
- ✓ All alarm systems (Fire and Security) were serviced by qualified engineers at regular intervals throughout the year
- ✓ Coded locks for entry onto the school premises and into building were changed for security purposes
- ✓ A full PAT test for all electrical equipment was completed
- ✓ Maintenance work was completed on our Sprinkler and Boiler systems
- ✓ Our CCTV system was serviced and faulty cameras replaced
- ✓ Snowdonia Fire inspected out Fire Extinguishers



★ Working together to become... ★

PASSIONATE, ASPIRATIONAL, RESPECTFUL, KNOWLEDGABLE LEARNERS!

Information & Policies

Our School Prospectus is updated annually and can be found on our website at

www.parkcpilay.co.uk

Language:

Park C.P. is an English medium school where Welsh is taught as a second language to all children. Children are given opportunities throughout the day to extend upon their English vocabulary and understanding along with opportunities to develop their Welsh Language understanding and fluency.

Treasure Chest:

Treasure Chest continued to provide excellent out of school care and Early Education to the children at Park CP. A range of activities are offered including Early Breakfast Club, After School Club and Wraparound Care for Nursery children.

Due to the Coronavirus pandemic all inspections of settings were postponed.

Healthy Schools:

Park CP continues to participate in Wrexham's Healthy Schools Initiative. Healthy eating is promoted through areas of Knowledge & Understanding of the World in Foundation Phase classes and during Science lessons in Key Stage 2. The School Meals Service works closely with school to promote healthy eating choices. Children are encouraged to drink water throughout the day and we have a number of drinking water stations placed throughout school.

Our Strategic Equality Plan was approved by Governors for 2020 to 2024.

Copies are available on request

Achievements This Year:

- ✓ Super Learning Days were introduced and proved to be popular with staff and children! A Pumpkin Day was held in the Autumn Term and a huge Splash Day in the summer! All costs were met from School Funds.
- ✓ Governors approved the budget to introduce a programme called Read, Write, Inc. to boost standards in literacy. Staff completed training and resources were purchased totalling £6,000
- ✓ New iPads and Chrome Books were purchased to improve standards of ICT across the school.
- ✓ An end of year Fun Day with Bouncy Castles and treats was arranged for all children, including those in Flying Start and all costs were met from School Funds.

Policy Updates:

All of our Policy documents for Curricular and Non-Curricular areas are in place, along with our School Improvement Plan and School Prospectus. Plans and schemes of work are created termly by staff across the school and ensure complete curriculum coverage. Copies of all out policies are available upon request.

In our Annual Report to Parents 2020 to 2021 we are not required to publish information relating to:

School Performance

Absence

Targets

In July 2021 our Year 6 pupils transferred to the following secondary schools:

Castell Alun, Darland, St Christopher's & Ysgol Bryn Alyn

Teaching & Learning:

Children throughout the school follow a curriculum designed to allow the all-round development of the child. The statutory Foundation Phase Framework and Key Stage 2 National Curriculum take account of the children's developmental needs and build on new skills that ensure all children become confident learners who are inspired and challenged to reach their full potential. The Literacy and Numeracy Frameworks (LNF) and the Digital Competence Framework (DCF) are embedded into our curriculum. During the Coronavirus pandemic staff introduced Blended Learning to the children and during the lockdown period from January 2021 to April 2021, learning opportunities were offered online to support children learning at home.

Additional Learning Needs:

During the year, school prepared for the introduction of the new Additional Learning Needs (ALN) Framework. Staff and governors undertook training and changes were made to our Annual Review Process. When a child is identified as having ALN, parents and staff work closely to ensure all reasonable measures are being taken to meet his/her needs. We have two Resourced Provision classes at school, one in Foundation Phase and one in Key Stage 2. Children are placed in our Resource Provisions by the Local Authority and all have Individual Education Plans. The school works very closely with outside agencies including the Educational Psychologist, the Local Authority Inclusion Officers and Speech and Language Therapists. Mrs C. Parry is our schools Additional Learning Educational Needs Co-Ordinator (ALNCo).

Toilets:

The school has the required number of toilets for children and adults. All toilets are cleaned on a daily basis and any defects are reported immediately. During the Coronavirus pandemic extra cleaning of toilet areas was carried out, along with social distancing markers and paper towels replaced the hand driers to ensure compliance with CoVid-19 Health and Safety Guidance.

Admission Arrangements for Pupils who have a Disability:

Admissions for pupils to Park CP is determined by Wrexham Local Authority. All pupils are welcomed here and we aim to reduce/eliminate all barriers of access to the curriculum and work towards full participation in the school community for pupils and prospective pupils with a disability. We fully comply with the Disability Discrimination Act.

Community Links:

Links with the community has proven challenging due to the pandemic. However, school continued to foster positive relationships with St Martin's Church, Llay and the Church of the Nazarene. Both Father Huw and Pastor David sent assemblies for the children via Zoom, which were much appreciated.

School were involved in the Remembrance Day celebrations within the village.

Police Liaison Officers visited the school to deliver lessons to children from years 1 to 6 around various issues including Substance Misuse, Online Safety and Anti-Social Behaviour. The Community Council gave generous grants throughout the year to School Funds, ensuring that children had a variety of CoVid safe treats at Christmas and in the Summer term.

We also received donations from local company Strode and Jeffries and Gresford United Charity.

School Improvement:

Our priorities for the year 2020 to 2021 focussed predominantly on the Well-Being of the children following the long lockdown of 2020. Our Key Areas were:

To improve and promote pupil Well-Being
To improve standards in reading across the school.

To ensure a consistent and robust approach to planning and assessment are in place.

Governors received termly updates to monitor the School Improvement Plan and despite the pandemic all priorities were met.



Term Dates 2020 – 2021

Autumn Term

Preparation Days: 1st & 2nd September 2020

School Opens: Thursday 3rd September

School Closes: Friday 23rd October

School Opens: Monday 2nd November 2020

School Closes: Friday 18th December 2020

Spring Term

Training Day 4th January 2021

School Opens: Tuesday 5th January 2021

School Closes: Friday 12th February 2021

Training Day: Monday 22nd February 2021

School Opens: Tuesday 23rd February 2021

School Closes: Friday 26th March 2021

Summer Term

Training Day: Monday 12th April 2021

School Opens: Tuesday 13th April 2021

May Day: Monday 3rd May 2021

School Closes: Thursday 27th May 2021

Training Day: Friday 28th May 2021

School Opens: Monday 7th June 2021

School Closes: Friday 16th July 2021

Training Days: 19th & 20th July

Timings of the School Day

Foundation Phase: 8.55am to 3.05pm

Key Stage 2: 8.55am to 3.15pm

Due to CoVid-19 restrictions, times were staggered and changed from September 2020 to allow for social distancing. All children arrived at school between 8.45am and 9.05am and the day ended at 3.15pm at the latest for classes in Key Stage 2.

A meeting to discuss the Annual Governors report to parents will be arranged should a minimum of 5% of parents make a request for one.

To request a meeting, parents should email:

parents@park-pri.wrexham.sch.uk

by noon on the 15th July 2022 at the latest.

Staffing

During the 2020 to 2021 year, we welcomed back Mrs C Sear and Miss G Cushing following their Maternity Leave.

Mrs J Poole and Miss N Ramsay went on Maternity Leave during the summer term and both had healthy baby boys. Mrs Bowles was employed to cover the Maternity for Mrs Poole and Miss S Williams joined us to cover for Miss Ramsay.



Financial Statement 2020 to 2021

	Schools Budget 2020/21	Expenditure and Income to 28th February 2021	Expenditure And Income March 2021	Expenditure & Income to 31st March 2021	Balance At 31 st March 2021
0 - TOTAL EMPLOYEES	1,419,503.00	1,280,845.25	102,198.34	1,383,043.59	36,459.41
1 - TOTAL PREMISES	76,047.00	66,560.44	9,550.12	76,110.56	-63.56
3 - TOTAL SUPPLIES	38,978.00	16,338.41	1 22,976.95	39,315.36	-337.36
4 - TOTAL 3RD PARTY PAYMENTS	39,827.00	0.00	0.00	0.00	39,827.00
6 - TOTAL SUPPORT SERVICES	77,609.00	71,143.00	6,406.00	77,549.00	60.00
8 - TOTAL INCOME	-304,378.00	-340,563.08	-66,353.70	-406,916.78	102,538.78
MDP275 - LLAY PARK PRIMARY	1,347,786.00	1,094,324.02	74,777.71	1,169,101.73	178,684.27

