

# Curriculum Vision 2024

## Our Curriculum Vision

Park Community Primary School is a place where children are inspired to become independent learners in a positive learning environment, where everyone is valued, where equality and diversity are celebrated and where inclusion is embraced. Our curriculum is designed to stimulate minds, developing a lifelong love of learning. We aim to inspire ambitious, independent, creative, sociable and inquisitive learners who are engaged in achieving their aspirations and dreams. Our curriculum is exciting, challenging and varied, developing a sense of awe and wonder in an ever changing world.

When consulting with children, parents, staff, governors and the wider community it was determined that our curriculum will be:

- Inclusive
- Inspiring
- Creative
- Flexible
- Encouraging
- Nurturing
- Diverse
- Engaging
- Fun
- Rewarding

Children will be encouraged to support each other, be resilient and confident when facing challenges and show determination to achieve their goals.



## Outdoor Learning

“The best classroom and richest cupboard is roofed only by the sky” (M. McMillian)

Our curriculum will provide plentiful opportunities for outdoor learning, including Forest School sessions and working within the local community. These experiences will broaden the children’s skills, help to embed the four purposes outside of the classroom walls and encourage a healthy lifestyle. Teachers make the most of our extensive grounds which provide a wealth of opportunity for the children to explore and develop across a wide range of areas of learning. We have a full time, qualified Forest School Leader on site to ensure the children have the best possible experiences and develop a love of the great outdoors.



## Independent Learning

A prominent feature within our curriculum is allowing all children their “Time to Shine.” We provide opportunities throughout the day for independent and peer to peer learning in well-resourced and carefully planned areas of continuous provision.



## Wales & the Welsh Language

Throughout our curriculum opportunities are included for all children to develop their fluency in the Welsh language and further develop their knowledge and understanding of Welsh heritage and culture. We achieved the Cymraeg Campus Bronze Award in 2023 and Welsh plays a prominent role in our school.



## The Four Purposes

Our curriculum is designed to embrace and embed the four purposes across all areas of learning. We will provide learning experiences of the highest quality which motivate and excite children in the classroom and beyond.

### Ambitious, capable learners who:

- set themselves high standards and seek and enjoy challenge
- are building up a body of knowledge and have the skills to connect and apply that knowledge in different contexts
- are questioning and enjoy solving problems
- can communicate effectively in different forms and settings, using both Welsh and English
- can explain the ideas and concepts they are learning about
- can use number effectively in different contexts
- understand how to interpret data and apply mathematical concepts
- use digital technologies creatively to communicate, find and analyse information
- undertake research and evaluate critically what they find

and are ready to learn throughout their lives

### Enterprising, creative contributors who:

- connect and apply their knowledge and skills to create ideas and products
- think creatively to reframe and solve problems
- identify and grasp opportunities
- take measured risks
- lead and play different roles in teams effectively and responsibly
- express ideas and emotions through different media
- give of their energy and skills so that other people will benefit

and are ready to play a full part in life and work

### Ethical, informed citizens who:

- find, evaluate and use evidence in forming views
- engage with contemporary issues based upon their knowledge and values
- understand and exercise their human and democratic responsibilities and rights
- understand and consider the impact of their actions when making choices and acting
- are knowledgeable about their culture, community, society and the world, now and in the past
- respect the needs and rights of others, as a member of a diverse society
- show their commitment to the sustainability of the planet

and are ready to be citizens of Wales and the world

### Healthy, confident individuals who:

- have secure values and are establishing their spiritual and ethical beliefs
- are building their mental and emotional well-being by developing confidence, resilience and empathy
- apply knowledge about the impact of diet and exercise on physical and mental health in their daily lives
- know how to find the information and support to keep safe and well
- take part in physical activity
- take measured decisions about lifestyle and manage risk
- have the confidence to participate in performance
- form positive relationships based upon trust and mutual respect
- face and overcome challenge
- have the skills and knowledge to manage everyday life as independently as they can

and are ready to lead fulfilling lives as valued members of society

## Our Uniqueness

Park C.P. is located in the heart of the village of Llay, near Wrexham. Formerly a mining village, Llay has a strong community focus, with the Royal British Legion and Church playing prominent roles locally. We are fortunate to have the beautiful Alyn Waters Country Park on our doorstep and within the village there are well established football and cricket clubs. Our curriculum aims to take advantage of the wealth of experiences and opportunities offered locally, whilst also helping our children to realise that the wider world is full of possibilities of which they should take advantage.



## Our Curriculum Pledges

Each year, our curriculum will include:

- **Whole School & Community Projects**

- Fundraising Events
- Celebrations of local and national festivals and events
- Pupil Voice
- Well-Being Awareness

**WHOLE SCHOOL & COMMUNITY PROJECTS**

It is vitally important that our children know and understand the community spirit and camaraderie that exists in the village of Llay. Projects to develop their knowledge of local heritage and broaden their understanding of the support and activities available locally will help to promote a sense of pride & respect in the village and beyond. This aspect of close community working and developing partnerships with local groups such as the Church and Royal British Legion will feature prominently in our curriculum.



**FUNDRAISING EVENTS**

Each year, in discussion with children, parents and the community, we will select a charity (local or national) to raise awareness of and funds for. Fundraising gives children a sense of empowerment, helps to develop their moral understanding and allows them the opportunity to bring about positive change for the greater good. Demonstrating to the children the benefits of being generous with their time and personal effects is also an important value that we want the children of Park C.P. to carry with them throughout their lives.



**CELEBRATIONS**

Careful planning will ensure that our curriculum includes opportunities throughout the year for our children to be involved in special celebrations, festivals and events (including local, national and international occasions). Such events will ensure the children embrace diversity and experience different religions and cultures, gaining a true passion for inclusivity.





## Areas of Learning Experiences

Our Curriculum consists of six Areas of Learning Experiences:

- Languages, Literacy & Communication (*including Welsh and British Sign Language*)
- Mathematics & Numeracy
- Science & Technology
- Humanities
- Expressive Arts
- Health & Well-Being

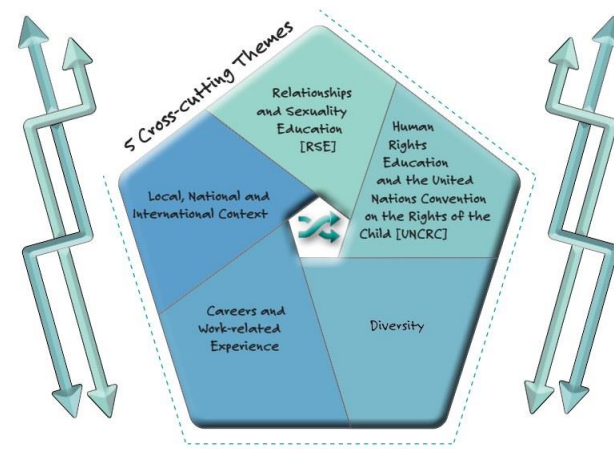
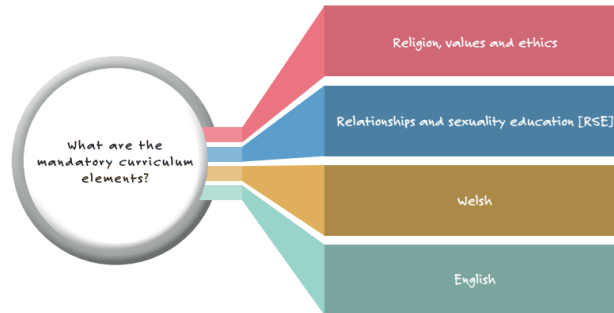
In addition our curriculum areas are enhanced by the Literacy & Numeracy Framework & the Digital Competency Framework. Carefully planned cross-curricular opportunities exist within our curriculum to ensure our children develop their skills and then utilise them effectively across a range of opportunities.

Whilst designing our curriculum we have also considered the following elements to ensure the children at Park C.P. truly become ambitious, informed, capable citizens of Wales and the wider world:

- Careers & work related experiences



- Well-being of Future Generations (Wales) Act 2015
- United Nations Convention on the Rights of the Child (UNCRC)
- United Nations Convention on the Rights of Persons with Disabilities (UNCRPD)
- Additional Learning Needs and Education Tribunal (Wales) Act 2018



## Languages, Literacy and Communication

Languages, Literacy and Communication is at the heart of all learning, enabling our learners to express themselves effectively, articulate their feelings, opinions and ideas and supporting learning across the curriculum. Our aim is to inspire and develop learners' creativity and imagination, engaging them as listeners, speakers, readers, and writers, igniting curiosity through a variety of literature. We will enable learners to become multilingual, using Welsh, English, and international languages, developing a curiosity and celebrating other languages of the world. In rich learning environments, our learners will become creative, resilient, adaptable and empathetic young people who discover their own identity, have pride in themselves and their culture, embracing a bilingual Wales in an international context. We aim to instil a lifelong love of languages and literature, develop a sense of self, place and voice in society which will allow learners to play a full part in life and work in Wales and the wider world.

For our learners, we aim for them to become ambitious, capable learners who effectively communicate in Welsh, English and international languages. Our learners will develop as enterprising, creative contributors who show confidence in using languages, enabling them to adapt to different roles, think creatively, solve problems and take risks. We intend to equip learners with the knowledge and skills they need to participate and make their voice heard effectively, developing as ethical informed citizens. We aim to support our learners in becoming healthy, confident individuals, articulating their feelings and interpreting those of others, developing positive relationships.

For our staff, we aim to support and develop greater subject knowledge. We will provide opportunities for learners to develop understanding, skills and dispositions in oracy, reading, writing and literature. All staff will have high aspirations for learners, promoting independence and supporting each learner on their language journey. We will ensure a consistent approach to the teaching of Languages, Literacy and Communication is seen throughout the school and offer opportunities to celebrate our culture and that of others.

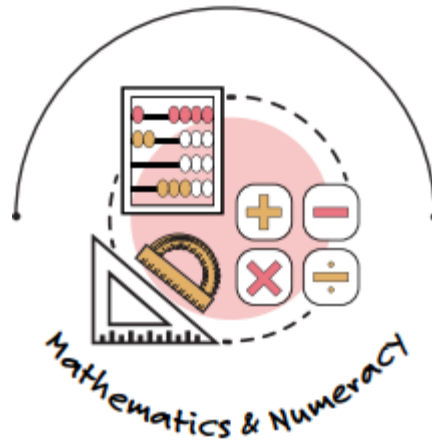


## Mathematics and Numeracy

Mathematics and Numeracy underpins so many aspects in our daily lives. The development of Maths and Numeracy, (Numeracy: the application of this Maths to solve problems in real-life contexts), plays a critical role in the development of our learners. Our aim is for our learners to be fluent, confident, capable Mathematicians, who can access Maths mastery, and develop their Maths and Numeracy skills: applying these in other subjects across the curriculum. Learners in our school will be challenged to achieve their maximum potential through innovative pedagogical approaches and collaborative working, not segregated by ability. In our learning environments, learners will show resilience and perseverance using their skills and knowledge to solve a range of authentic real-life problems. Staff will provide engaging and exciting learning experiences, which will equip our learners to become ethically, informed citizens ready to be citizens of Wales and the wider world.

We aim for our learners to become ambitious and capable and have a positive attitude to the Maths and Numeracy: developing a lifelong interest in the subject. Learners will become enterprising, creative contributors: applying their mathematical skills and knowledge to solve real-life problems. In growing learners, as ethically informed citizens, they will be able to analyse data, to make educated decisions on social, economic, political, and environmental matters, which will benefit society. By supporting our learners in becoming healthy, confident individuals, they will be able to make well-informed choices to become financially responsible: aiding to their lifelong health and well-being.

We will support and develop staff to have greater subject knowledge through wider reading: making connections to our working context. Staff will be given development opportunities within and beyond the school to seek innovative pedagogical approaches to improve the teaching and learning of Maths and Numeracy. Staff will be encouraged to establish collaborative networks, sharing good practice, and encouraging others to flourish. Staff will be accountable for learner outcomes and well-being in Maths and Numeracy. They will ensure the four purposes are addressed in planning and practice, whilst making sure learners are exposed to authentic real-life contexts.



## Science and Technology

In Science & Technology, our aims are:

- To build confident and competent learners within all areas of Science and Technology without the fear of failure.
- Provide opportunities for all learners to explore their own curiosity within a variety of environments e.g. school, local and wider.
- Encourage all learners to be responsible for their learning by providing opportunities for them to make choices around what they want to learn and how they want to find out the answers.
- To allow learners to explore and investigate at their own pace, therefore developing their own independence when experiencing something new.

Our staff, we aim to:

- Feel confident and enjoy what is being taught.
- Understand what and how to obtain the best from our learners, through relevant additional training.
- Provide access to sufficient & appropriate resources.
- Be supportive of each other with ideas.
- Encourage to change our focus to the process rather than the end product.

We aim for pupils to:

- Explore without fear of failure.
- Experiment and investigate.
- Make informed decisions about what they want to learn about.
- Have a voice over choice of investigations
- Experience a wide variety of fun and interesting activities.
- Immerse in opportunities to develop their life skills.
- Enjoy exploring and fulfilling their own curiosities.



## Humanities

In Humanities, our aim is to inspire and inform learners about their surroundings, including their local area, Wales and the wider world. We aim to help learners become confident, independent learners who explore and investigate human experiences to discover their heritage. Learners will seek to engage with the views held by humanity across the world and to respect different cultures, religions, values and philosophies. Learners will critically analyse the impact that they and others have on their local and wider environment, recognising cause and effect. All learners will have opportunities to understand how the people of Wales, its communities, history, culture, landscape, resources and industries, interrelate with the rest of the world. Experiences in Humanities will allow learners to increase self-confidence and self-esteem, build independence and resilience which will encourage them to lead fulfilling lives.

For our pupils, we aim for them to foster a sense of belonging to their local community, Wales and the wider world. We intend for them to become creative and critical thinkers who seek to explore and challenge themselves to gain wisdom and understanding. We aim for them to develop into confident and healthy learners who are striving to evolve into valued members of their society. Pupils will be given opportunities to explore and experience the natural world locally, within Wales and beyond.

For our staff, we aim to develop and expand greater subject knowledge. We propose to widen all children's experiences to guide them into creative and enterprising human beings. We intend for all staff to have high aspirations and to offer experiences that allow learners to become capable and ambitious explorers for life. We will plan to explore in and outside the classroom by investigating our local community and resources around us.

Humanities



## Health and Well being

In Health and Well-being, our aim is to equip learners with skills that will permeate all aspects of their learning. We aim to create learners who lead rewarding and fulfilling lives as valued members of their local community, Wales and the wider world. Learners will understand the lifelong benefits of maintaining their physical health and how this can positively impact their mental wellbeing. Learners will confidently make healthy choices and be acutely aware of how they relate to their physical and mental health. Having the opportunities to role play real life events will ensure learners being successful in critically analysing the impact of their decision making on themselves and others. Learners will own a notable acceptance of diverse viewpoints by exploring different values, religions and cultures preserved by others in the local community and the wider world. Health and Wellbeing will support learners to celebrate differences between themselves and others. By using a growth mindset, learners will discover and feel proud of their individual strengths and talents.

For our pupils, we aim for them to become ambitious, capable learners who continually seek to gain knowledge throughout their lives. We aim to create healthy, confident individuals who are ready to lead fulfilling lives as valued members of society. We aim to develop citizens of the future who will acquire lifelong skills and positively contribute to the continuous developing world.

For our staff, we aim to actively expand our knowledge in all areas of Health and Well-being. Within school, we will provide an inclusive environment which promotes caring and respectful attitudes towards learners, colleagues, families and the community. We will ensure that learners always feel valued and their efforts are celebrated. We plan to promote how a growth mindset can enrich all areas of learning.



## Expressive Arts

In Expressive Arts, our aim is to engage, motivate and support learners to develop their creative, artistic and performance skills. Our exciting curriculum immerses learners within the chosen theme, providing authentic learning experiences in Expressive Arts that are relatable and meaningful. Learners will explore a variety of genres, techniques, tools and materials and be encouraged to communicate their ideas through visual, physical, verbal, musical and technological means. We aim for learners to enhance their perception skills through responding, reflecting and evaluating their own work and the work of others, including diverse artists from Wales and beyond. Learners will plan, draft, design, make, choreograph and compose demonstrating a range of skills and application of knowledge. Experiences in the Expressive Arts aim to engage learners physically, socially and emotionally, nurturing their well-being, self-esteem and resilience, helping them become healthy, confident individuals, ready to lead fulfilling lives.

For our pupils, we aim for them to develop the capacity to formulate and communicate their ideas and feelings. We intend for them to use the creative process to improve and enhance their physical, mental and emotional wellbeing and resilience. We aim for learners to develop a sense of belonging, build self-confidence and recognise one another's worth and diversity.



For our staff, we aim to provide learning experiences that encourage the development of knowledge, skills and values through a thematic approach that engages all learners. We will foster an enquiring mind with the ability to question, choose and evaluate. We plan to harness the power of Expressive Arts to expand the horizons of every learner.



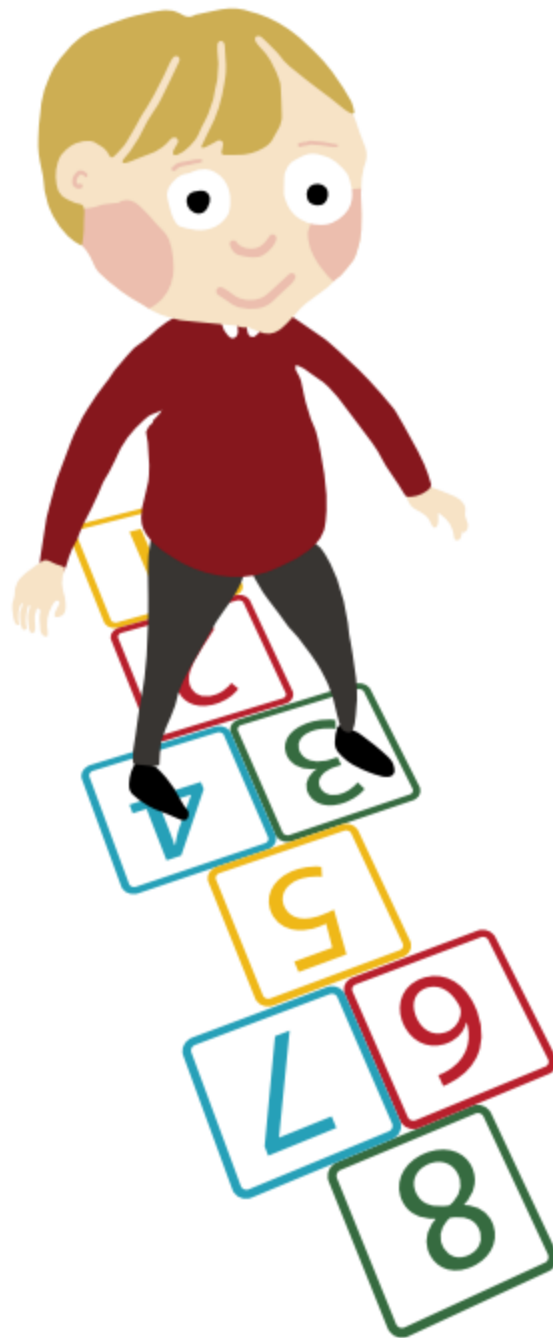
## Our Values

At Park C.P. every individual is valued for who they are and our differences are celebrated. We aim to ensure that our children hold strong values, allowing them to be ambitious, capable learners who embrace the world around them, welcoming challenge and striving to be passionate, resilient citizens of Wales and the world.

### Our Values:

- **Believe in yourself** - *have a positive outlook and understand that you can and will be able to reach your goals! Not everyone progresses at the same pace and that's OK!*
- **Have respect for yourself and others** - *treat others as you expect them to treat you. Be respectful and considerate of everyone.*

- **Take ownership for your actions** - *it's OK to make mistakes, but we must take responsibility for them and learn from them.*
- **Challenge yourself** - *be determined and remember it's OK to say "I can't do it YET " just don't give up*
- **Aspire to achieve your dreams** - *aim high and reach for the stars, sometimes you'll get there and other times you won't but that's OK! The world is full of opportunities, use these to your advantage.*
- **Be kind to yourself and others** - *look after your body and your mind, show kindness and encourage others to find their gifts.*



## Delivering Our Curriculum

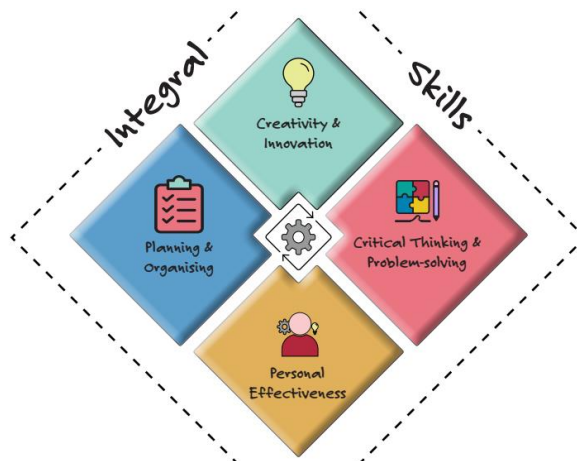
At Park C.P. we use a wide range of methods to deliver our exciting and engaging curriculum, giving the children a wealth of learning experiences. Our days usually start in the mastery of languages and mathematics using programmes such as Read, Write, Inc., Literacy and Language and Inspire Maths. Following this, children explore our termly themes covering all areas of learning experiences. Our themes are chosen by the children, question based and focus on a concept with an RVE link. Discussions

in each class determine which path of learning the children will follow and 'cold tasks' are undertaken which then impact on teacher's planning. For the year 2023 to 2024 our themes are:

- Famous People - Just because we can, does it mean we should??? - Values and Ethics
- Cynefin - Who do we belong to? - Identity & Belonging
- The Olympics - class based questions - Relationships & Responsibility

In addition, all children are given "Time to Shine" - opportunities to develop their own skills with independent choice through carefully planned areas of continuous provision.

Our curriculum, for the most part uses the **multi-disciplinary approach**, whereby the same theme is studied from the viewpoint of more than one area of learning. This allows our children to connect the learning more effectively and supports the development of transferable skills. Using this approach, our children gain a more holistic understanding of the world.



## Progression

The Curriculum for Wales 2022, offers children the opportunity to progress at a pace suited to their individual needs - a principal we firmly believe here at Park C.P.. Each child is on his/her own journey to success and we endeavour to ensure that the needs of every learner are met.

Assessment is undertaken regularly, in a variety of ways and this information is used carefully to inform planning. We use the Taith 360 system to assess, track and evaluate progress allowing us to support every child on their journey. Children are encouraged to be actively involved in their progression journey, recognising how they can improve and celebrating their successes. Progression Steps are included in our curriculum, however, unlike in previous years, there is no expectation for a child to have completed a step by a certain age.



## Principles of Progression

